

# Doors



# Fully Glazed Door



Complete match to Lumi Windows and Bi-folds



Exterior colour border to match Lumi windows and Bi-folds



Glass-fibre reinforced double rebate stormproof profiles

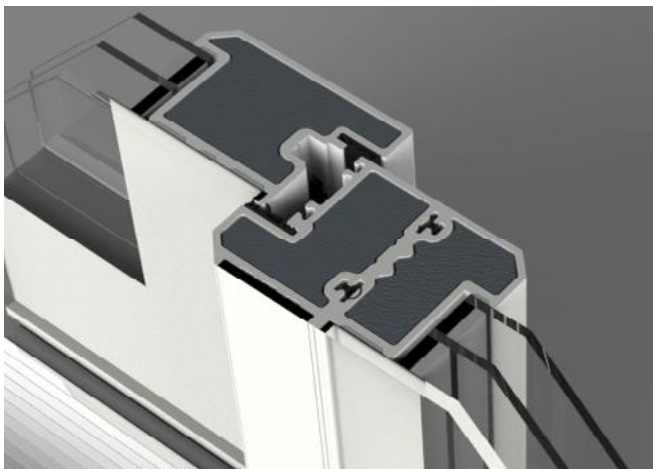
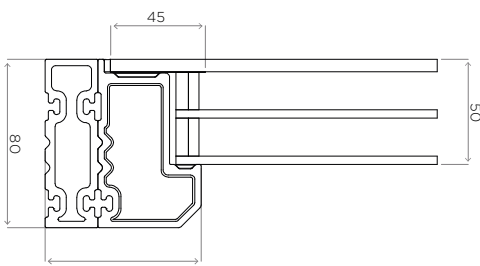


High security flag hinge

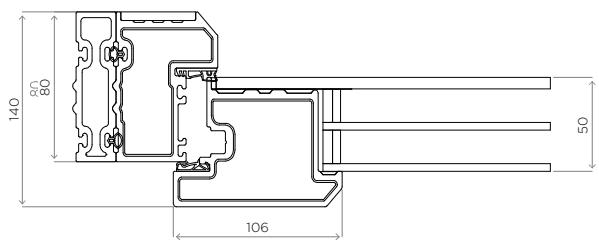


50mm triple glazed insulated unit

## A. Sidelight



## B. Fully Glazed Door



# Composite Entrance Door



Excellent thermal insulation with a U-value of 0.61 W/(m<sup>2</sup>K)

Thermal insulation of a solid door leaf is as low as 0.43 W/(m<sup>2</sup>K)

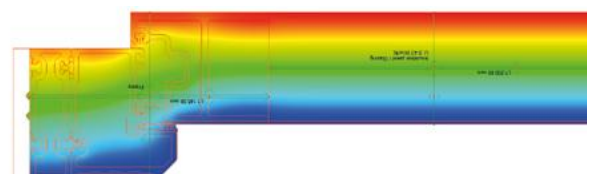
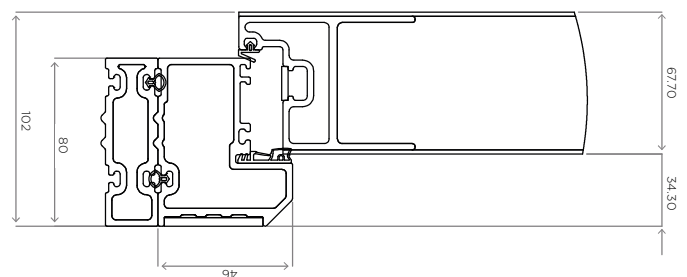
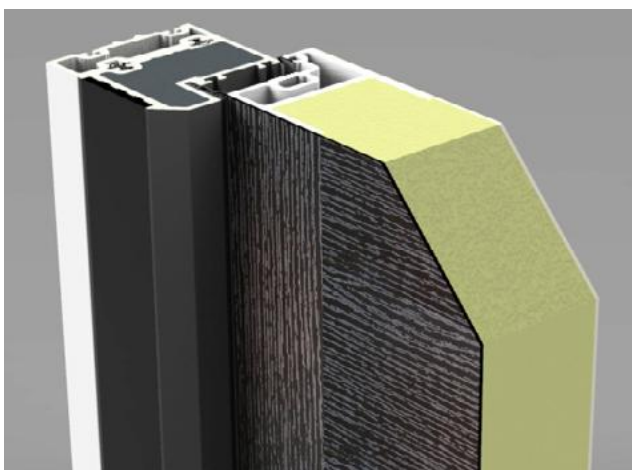
Double rebate glass-fibre reinforced system

Sash height up to 2187mm and sash width up to 1000mm

Sash weights up to 150kg are possible

64mm triple glazed unit

Large sidelights and toplights available







From their Co. Antrim headquarters, Apeer design, manufacture and supply some of the industry's most advanced windows and doors. Perhaps best known for their range of energy efficient, highly secure, low maintenance composite doors, Apeer is respected as a pioneer in the door and glazing markets.

[www.appeer.co.uk/lumi](http://www.appeer.co.uk/lumi)

Woodside Industrial Estate  
Woodside Road  
Ballymena, Co. Antrim  
Northern Ireland BT42 4HX

T: 08456 729 333  
T: 04825 632 200 (ROI)  
[sales@apeer.co.uk](mailto:sales@apeer.co.uk)

Apeer is a registered brand of  
New World Developments Ltd.

New World reserves the right to make  
alterations to any of the featured  
products without prior notice.